

Views from Rockview



Views from Washington



Views from Linden

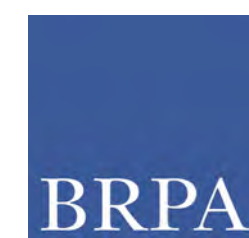


Views from Sycamore



© Copyright 2021 Barton Ross & Partners, LLC Architects. All Rights Reserved.

EXISTING SITE CONDITIONS



Barton Ross & Partners, LLC Architects  
184 S. Livingston Ave., Suite 9-140  
Livingston, NJ 07039 (973) 818-4749

**FOR SCHEMATIC PURPOSES ONLY - NOT FOR CONSTRUCTION**

**Yeshiva New Academic Building**  
Schematic Design

21 Rockview Avenue  
North Plainfield, Somerset Co., New Jersey

0.01

November 22, 2021



Views around Washington Park Historic District, besides wood construction, stucco was a predominant historic material utilized in the neighborhood

Previous Yeshiva HPC Application



Taking design inspirations from Washington Park Historic District



HISTORIC DISTRICT PRECEDENTS

© Copyright 2021 Barton Ross & Partners, LLC Architects. All Rights Reserved.



Barton Ross & Partners, LLC Architects  
184 S. Livingston Ave., Suite 9-140  
Livingston, NJ 07039 (973) 818-4749

**FOR SCHEMATIC PURPOSES ONLY - NOT FOR CONSTRUCTION**

Yeshiva New Academic Building  
Schematic Design

21 Rockview Avenue  
North Plainfield, Somerset Co., New Jersey

0.02

November 22, 2021



SYCAMORE

SYCAMORE

Existing Building

Existing Building

Building to be Demolished

Sidewalks/Paths to be Removed

Sidewalks/Paths to be Removed

GAZEBO  
TBR

Area of Ground Disturbance

Gazebo to be Demolished

Trees to be Removed

EXIST. SHED  
TBR

Shed to be Demolished

MINIMUM BUILDING FRONT SETBACK LINE (TYP.)

EX. SHRUB ROW

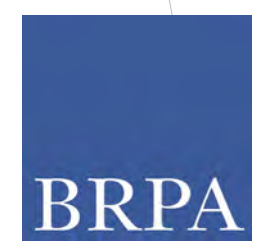
LINDEN

1 DEMO SITE PLAN  
SCALE: 1/8" = 1'-0"



DEMO SITE PLAN

© Copyright 2021 Barton Ross & Partners, LLC Architects. All Rights Reserved.



Barton Ross & Partners, LLC Architects  
184 S. Livingston Ave., Suite 9-140  
Livingston, NJ 07039 (973) 818-4749

**FOR SCHEMATIC PURPOSES ONLY - NOT FOR CONSTRUCTION**

**Yeshiva New Academic Building**  
Schematic Design

21 Rockview Avenue  
North Plainfield, Somerset Co., New Jersey

1.00

November 22, 2021



SYCAMORE

SYCAMORE

Existing Building

New trees

Existing Building

School Entrance

RESTROOMS

ROSH YESHIVA OFFICE  
195 SF

CUBICLES  
128 SF

ELEV.

STAIR 2

Study Hall

BAIS MEDRASH  
4110 SF

GRAND LOBBY  
1364 SF

Grand Lobby

STAIR 1

COAT RM  
356 SF

Emergency Exit

Public Entrance

EX. SHRUB ROW

Possible location for geothermal underground well field

8,096 GSF

1 1ST FLOOR SCHEMATIC PLAN  
SCALE: 1/8" = 1'-0"



ARCHITECTURAL PLANS

© Copyright 2021 Barton Ross & Partners, LLC Architects, All Rights Reserved.



Barton Ross & Partners, LLC Architects  
184 S. Livingston Ave., Suite 9-140  
Livingston, NJ 07039 (973) 818-4749

**FOR SCHEMATIC PURPOSES ONLY - NOT FOR CONSTRUCTION**

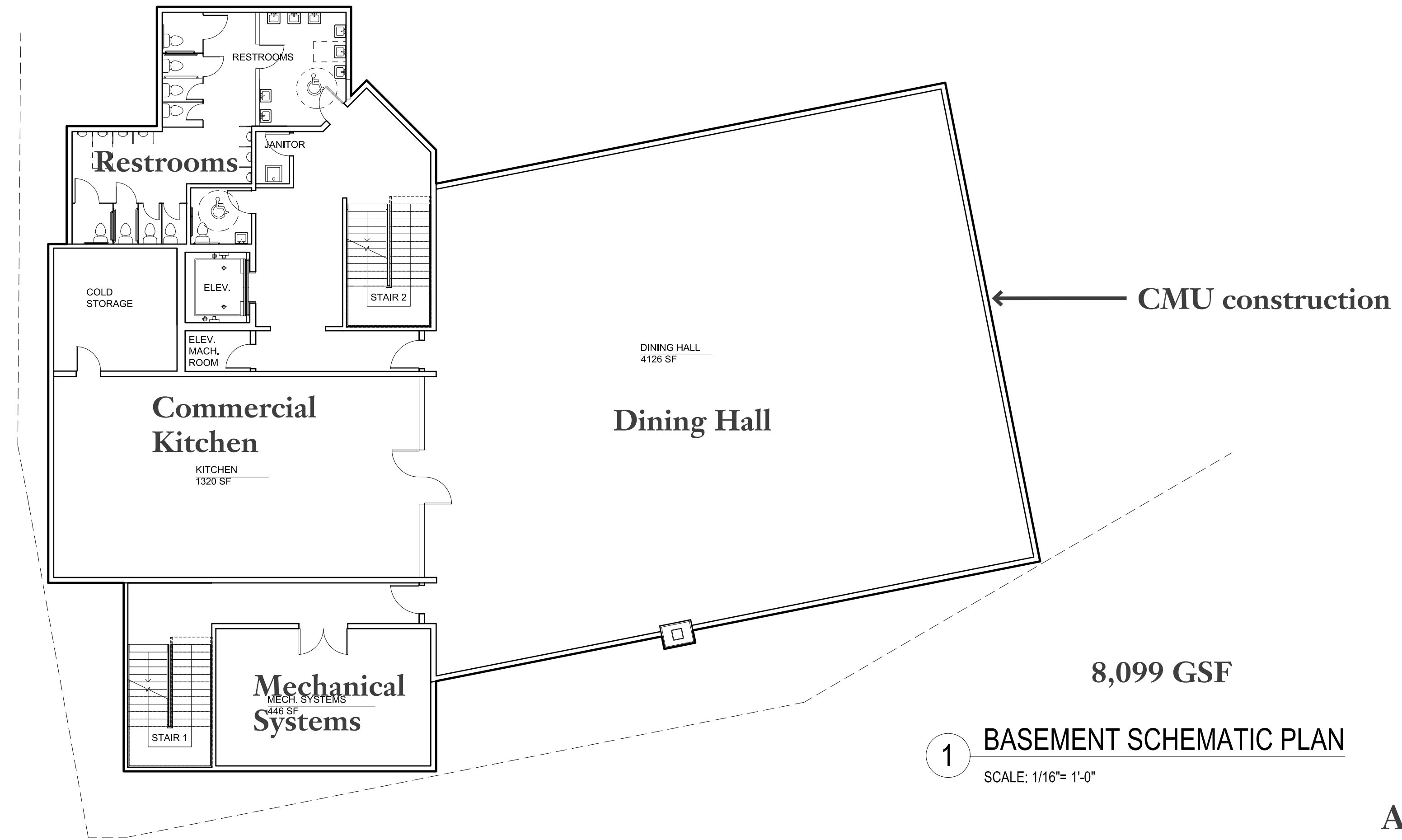
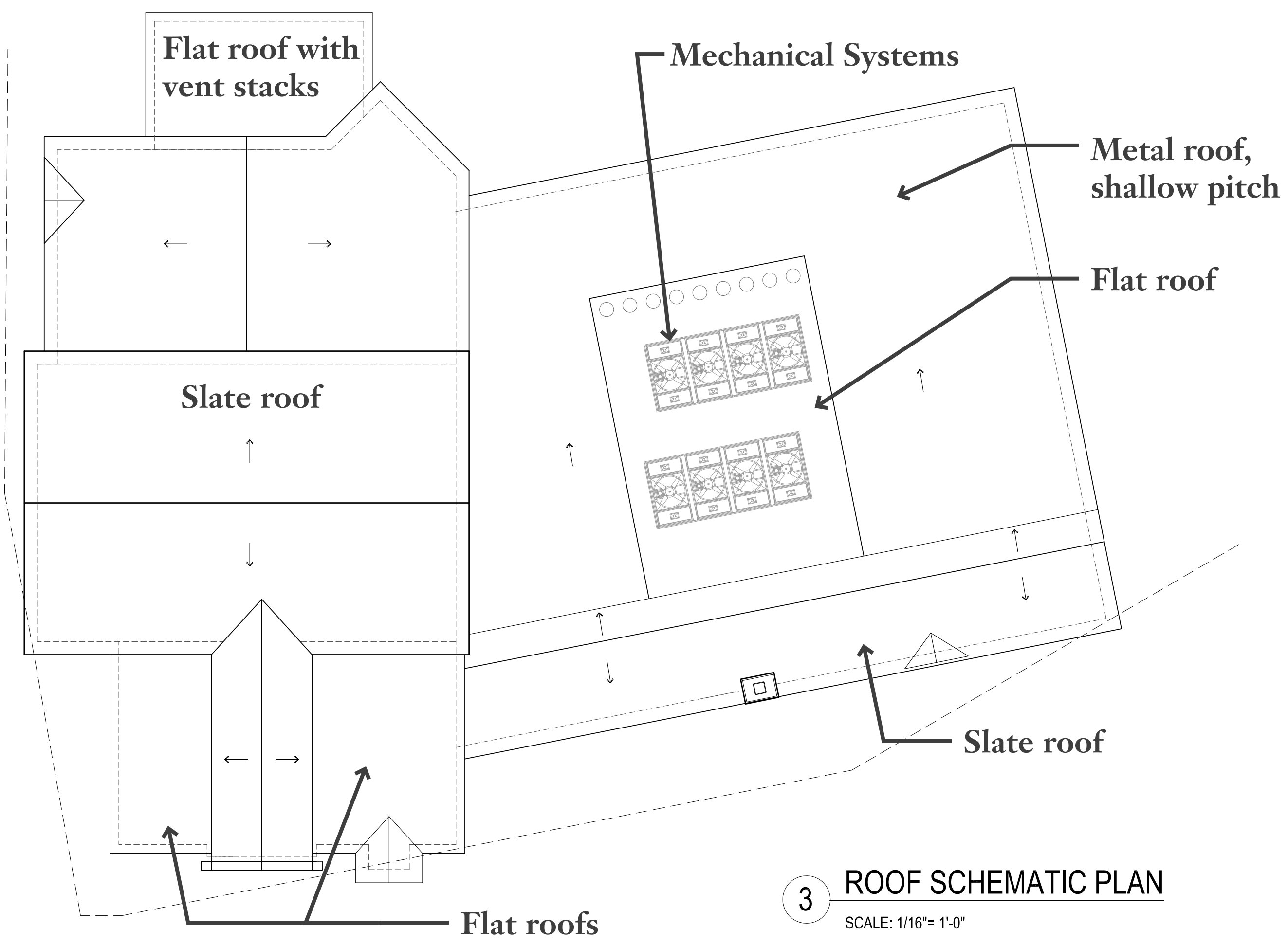
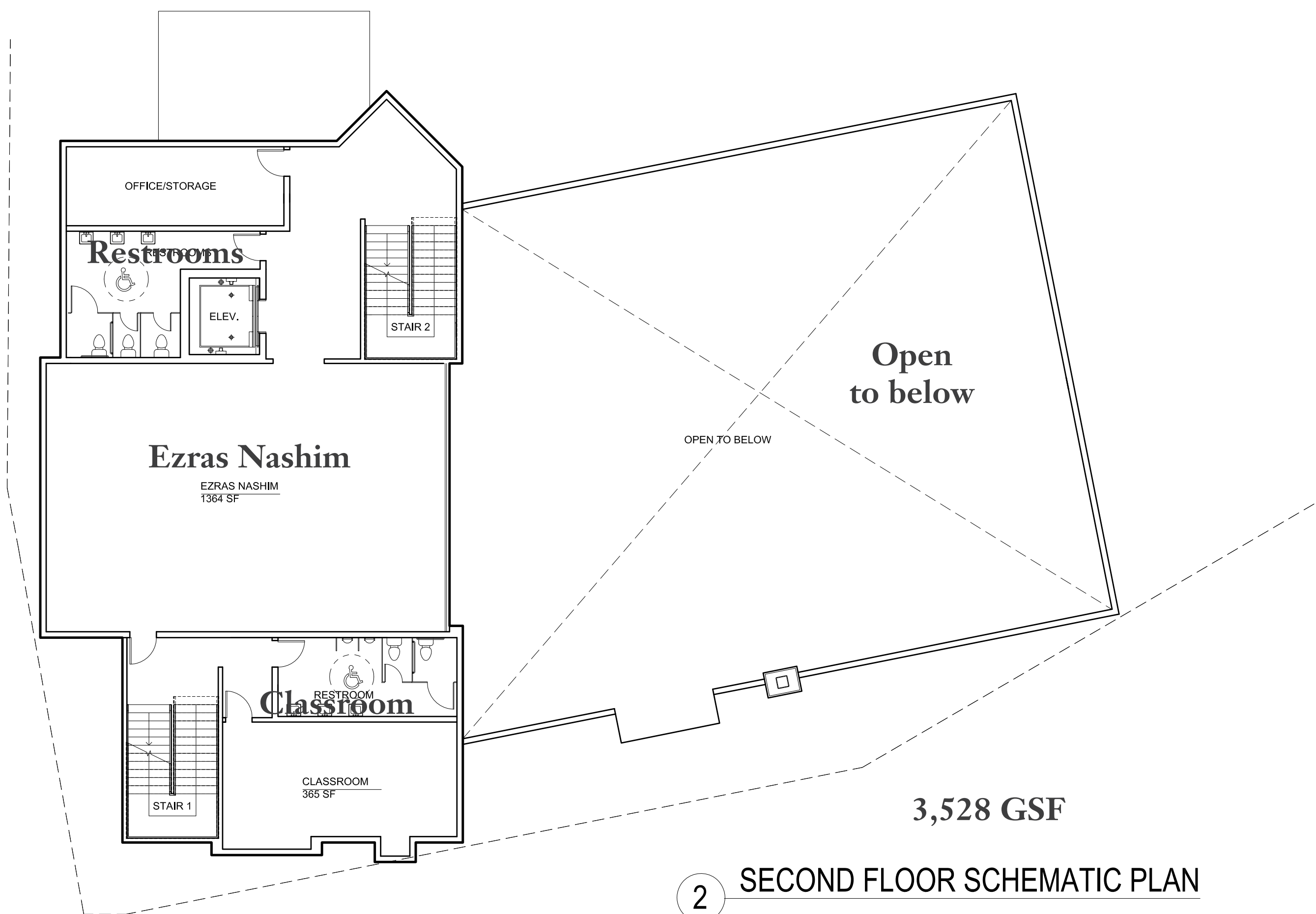
**Yeshiva New Academic Building**  
Schematic Design

21 Rockview Avenue  
North Plainfield, Somerset Co., New Jersey

1.01

November 22, 2021





© Copyright 2021 Barton Ross & Partners, LLC Architects, All Rights Reserved.



Barton Ross & Partners, LLC Architects  
184 S. Livingston Ave., Suite 9-140  
Livingston, NJ 07039 (973) 818-4749

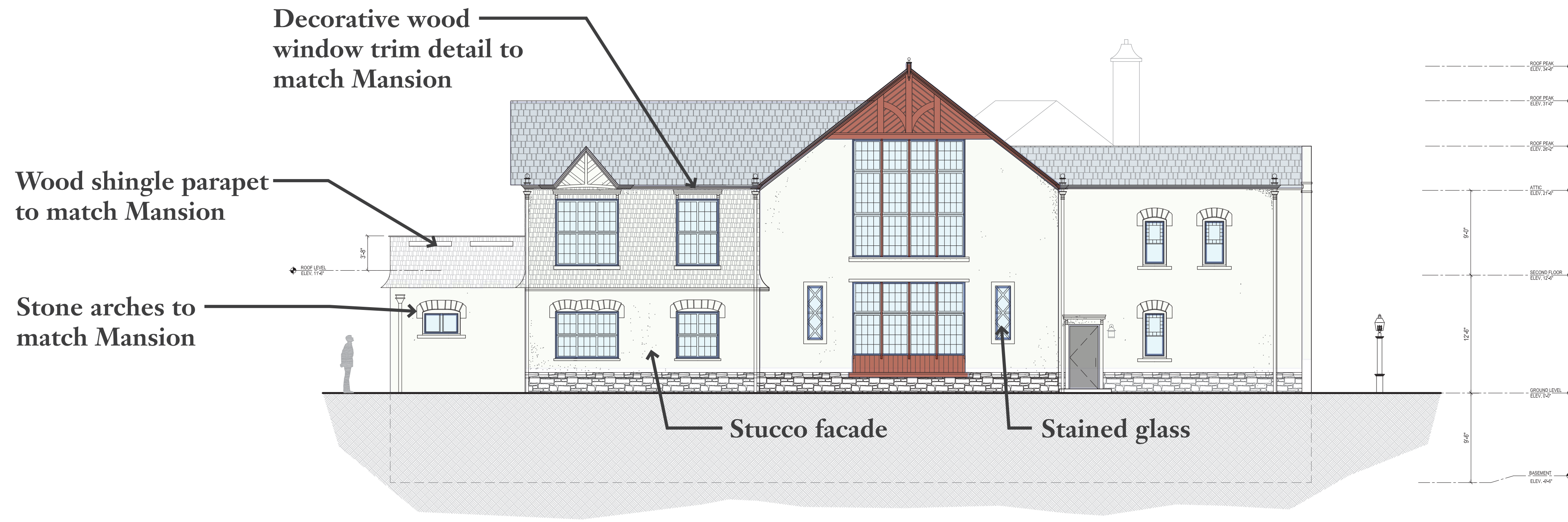
**FOR SCHEMATIC PURPOSES ONLY - NOT FOR CONSTRUCTION**

**Yeshiva New Academic Building**  
Schematic Design

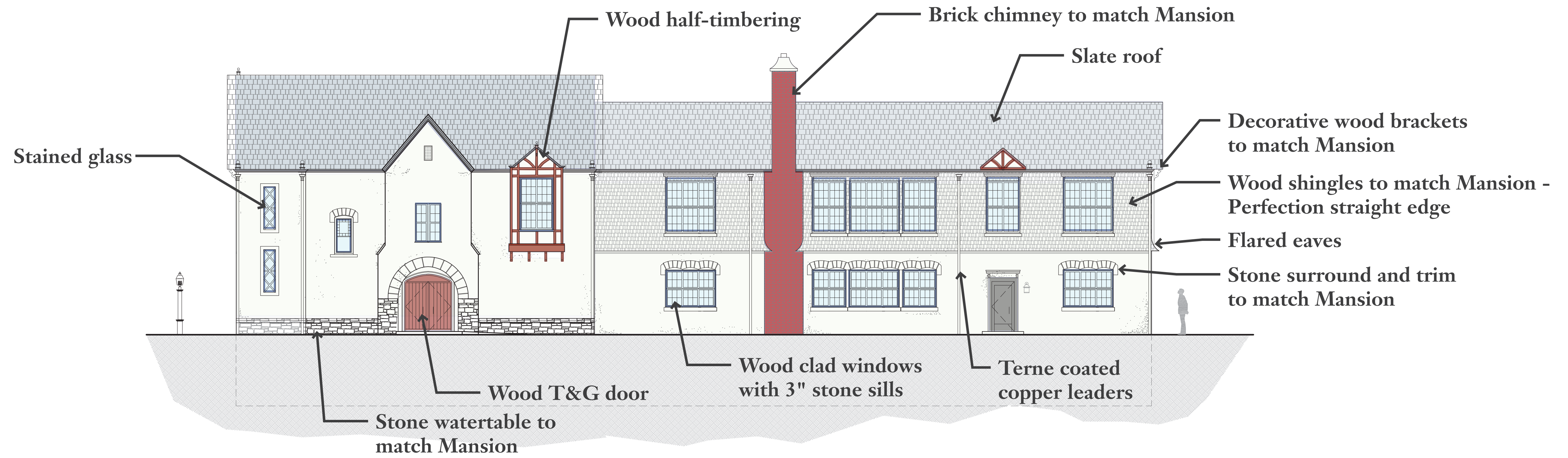
21 Rockview Avenue  
North Plainfield, Somerset Co., New Jersey

**ARCHITECTURAL PLANS**



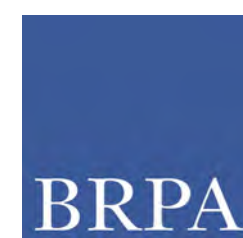


1 SYCAMORE ELEVATION  
SCALE: 1/8" = 1'-0"



2 LINDEN ELEVATION  
SCALE: 1/8" = 1'-0"

© Copyright 2021 Barton Ross & Partners, LLC Architects, All Rights Reserved.



Barton Ross & Partners, LLC Architects  
184 S. Livingston Ave., Suite 9-140  
Livingston, NJ 07039 (973) 818-4749

**FOR SCHEMATIC PURPOSES ONLY - NOT FOR CONSTRUCTION**

**Yeshiva New Academic Building**  
Schematic Design

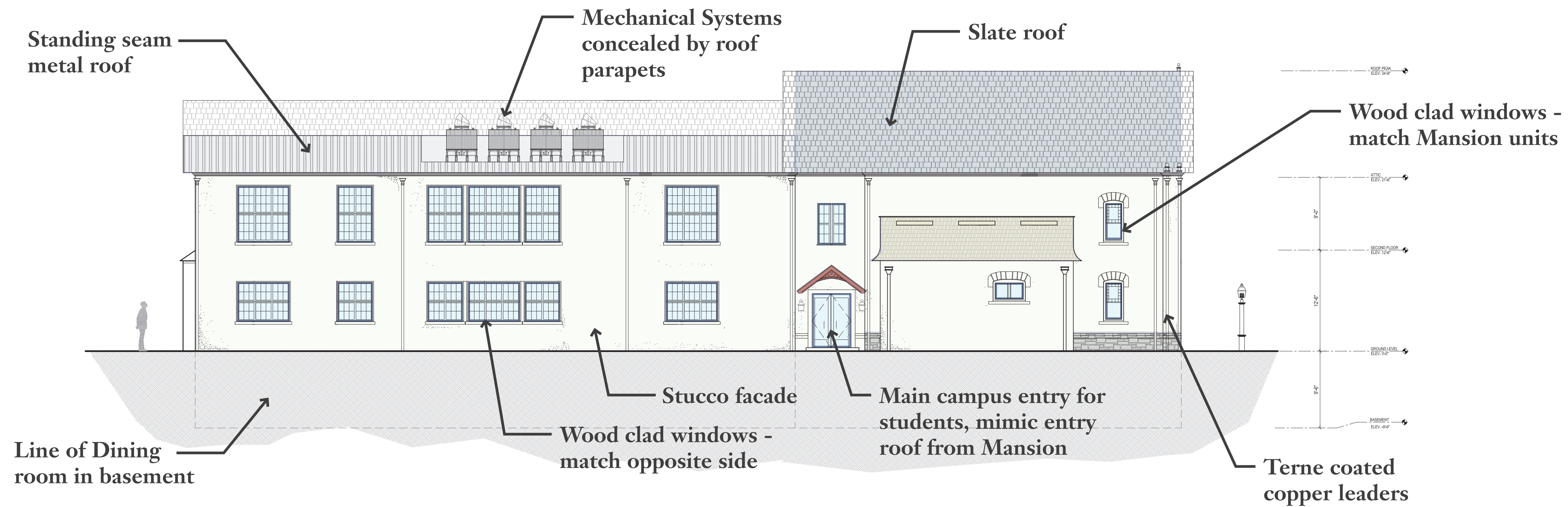
21 Rockview Avenue  
North Plainfield, Somerset Co., New Jersey

**ARCHITECTURAL ELEVATIONS**

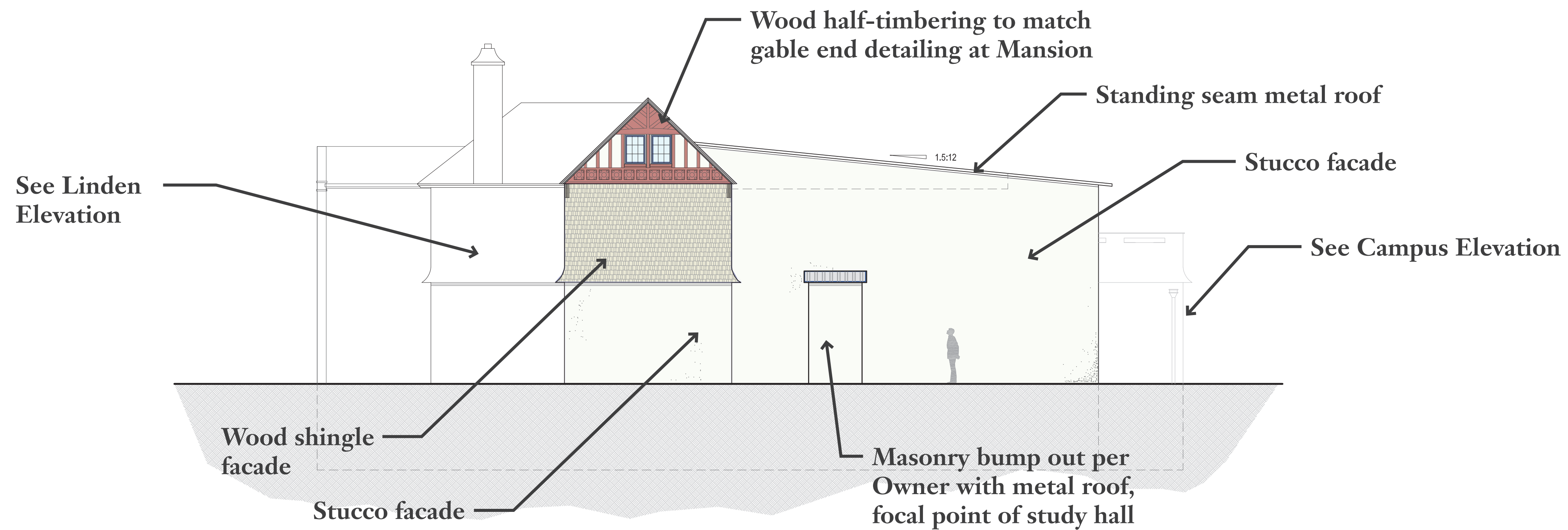
**1.03**

November 22, 2021





**1** CAMPUS ELEVATION  
SCALE: 1/8"= 1'-0"



**2** WASHINGTON ELEVATION  
SCALE: 1/8"= 1'-0"

© Copyright 2021 Barton Ross & Partners, LLC Architects, All Rights Reserved.



Barton Ross & Partners, LLC Architects  
184 S. Livingston Ave., Suite 9-140  
Livingston, NJ 07039 (973) 818-4749

**FOR SCHEMATIC PURPOSES ONLY - NOT FOR CONSTRUCTION**

**Yeshiva New Academic Building**  
Schematic Design

21 Rockview Avenue  
North Plainfield, Somerset Co., New Jersey

**ARCHITECTURAL ELEVATIONS**

**1.04**

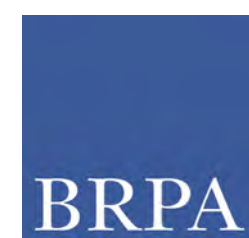
November 22, 2021





© Copyright 2021 Barton Ross & Partners, LLC Architects, All Rights Reserved.

**RENDERING - VIEW LOOKING NORTHEAST**



Barton Ross & Partners, LLC Architects  
184 S. Livingston Ave., Suite 9-140  
Livingston, NJ 07039 (973) 818-4749

**FOR SCHEMATIC PURPOSES ONLY - NOT FOR CONSTRUCTION**

**Yeshiva New Academic Building**  
Schematic Design

21 Rockview Avenue  
North Plainfield, Somerset Co., New Jersey

**1.05**

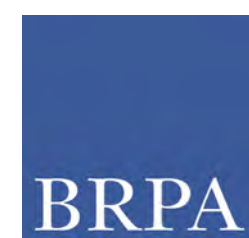
November 22, 2021





© Copyright 2021 Barton Ross & Partners, LLC Architects. All Rights Reserved.

**RENDERING - AERIAL VIEW**



Barton Ross & Partners, LLC Architects  
184 S. Livingston Ave., Suite 9-140  
Livingston, NJ 07039 (973) 818-4749

**FOR SCHEMATIC PURPOSES ONLY - NOT FOR CONSTRUCTION**

**Yeshiva New Academic Building**  
Schematic Design

21 Rockview Avenue  
North Plainfield, Somerset Co., New Jersey

**1.06**

November 22, 2021