

YESHIVA NEW ACADEMIC BUILDING
21 Rockview Avenue
North Plainfield, Somerset Co., New Jersey



Existing Aerial View of the property



Proposed Aerial View of new building looking north

REV. - JANUARY 28, 2022

Views from Rockview



Views from Washington



Views from Linden

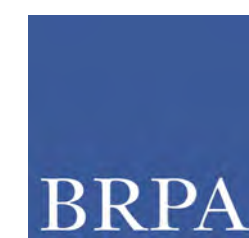


Views from Sycamore



© Copyright 2021 Barton Ross & Partners, LLC Architects. All Rights Reserved.

EXISTING SITE CONDITIONS



Barton Ross & Partners, LLC Architects
184 S. Livingston Ave., Suite 9-140
Livingston, NJ 07039 (973) 818-4749

FOR SCHEMATIC PURPOSES ONLY - NOT FOR CONSTRUCTION

Yeshiva New Academic Building
Schematic Design

21 Rockview Avenue
North Plainfield, Somerset Co., New Jersey

0.01

January 28, 2022 - Revised

Views around Washington Park Historic District, besides wood construction, stucco was a predominant historic material utilized in the neighborhood

Previous Yeshiva HPC Application



Taking design inspirations from Washington Park Historic District

© Copyright 2021 Barton Ross & Partners, LLC Architects. All Rights Reserved.

HISTORIC DISTRICT PRECEDENTS



Barton Ross & Partners, LLC Architects
184 S. Livingston Ave., Suite 9-140
Livingston, NJ 07039 (973) 818-4749

FOR SCHEMATIC PURPOSES ONLY - NOT FOR CONSTRUCTION

Yeshiva New Academic Building
Schematic Design

21 Rockview Avenue
North Plainfield, Somerset Co., New Jersey

0.02

January 28, 2022 - Revised

SYCAMORE

SYCAMORE

Existing Building

Existing Building

Building to be Demolished

Sidewalks/Paths to be Removed

Sidewalks/Paths to be Removed

Trees to be Removed

Gazebo to be Demolished

Area of Ground Disturbance

Shed to be Demolished

Chain-link fencing to be Removed

MINIMUM BUILDING FRONT SETBACK LINE (TYP.)

EX. SHRUB ROW

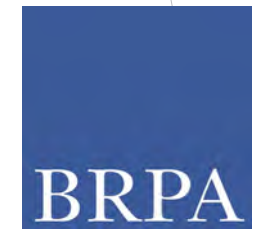
LINDEN

1 DEMO SITE PLAN
SCALE: 1/8" = 1'-0"



DEMO SITE PLAN

© Copyright 2021 Barton Ross & Partners, LLC Architects, All Rights Reserved.



Barton Ross & Partners, LLC Architects
184 S. Livingston Ave., Suite 9-140
Livingston, NJ 07039 (973) 818-4749

FOR SCHEMATIC PURPOSES ONLY - NOT FOR CONSTRUCTION

Yeshiva New Academic Building
Schematic Design

21 Rockview Avenue
North Plainfield, Somerset Co., New Jersey

1.00

January 28, 2022 - Revised

SYCAMORE

SYCAMORE

Existing Building

New trees

Existing Building

School Entrance

RESTROOMS

ROSH YESHIVA OFFICE
195 SF

CUBICLES
128 SF

ELEV.

STAIR 2

Study Hall

BAIS MEDRASH
4110 SF

GRAND LOBBY
1364 SF

Grand Lobby

STAIR 1

COAT RM
356 SF

Emergency Exit

Public Entrance

EX. SHRUB ROW

Possible location for geothermal underground well field

New fencing per HPC approvals

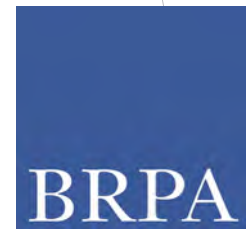
8,096 GSF

1 1ST FLOOR SCHEMATIC PLAN
SCALE: 1/8" = 1'-0"



ARCHITECTURAL PLANS

© Copyright 2021 Barton Ross & Partners, LLC Architects, All Rights Reserved.



Barton Ross & Partners, LLC Architects
184 S. Livingston Ave., Suite 9-140
Livingston, NJ 07039 (973) 818-4749

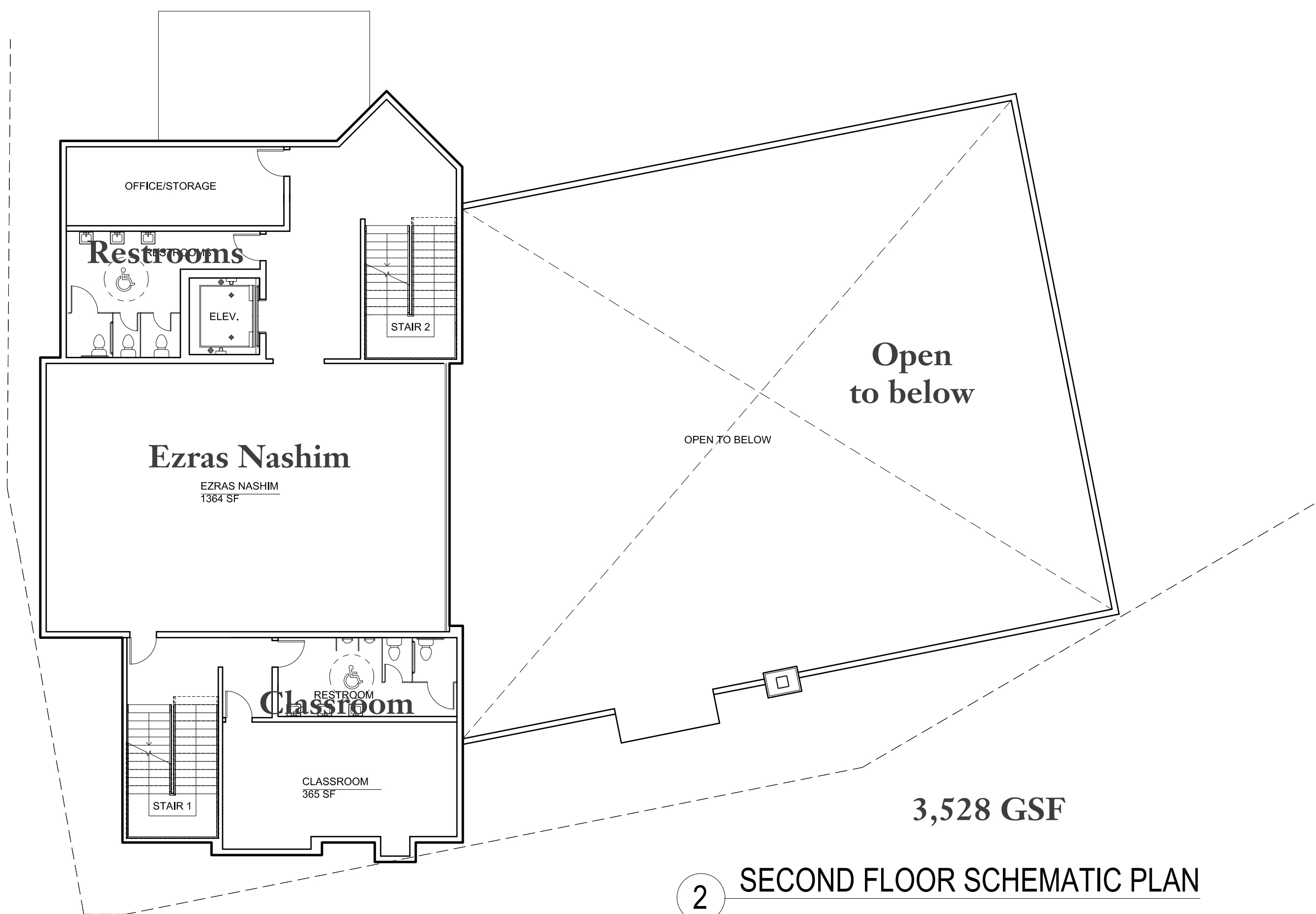
FOR SCHEMATIC PURPOSES ONLY - NOT FOR CONSTRUCTION

Yeshiva New Academic Building
Schematic Design

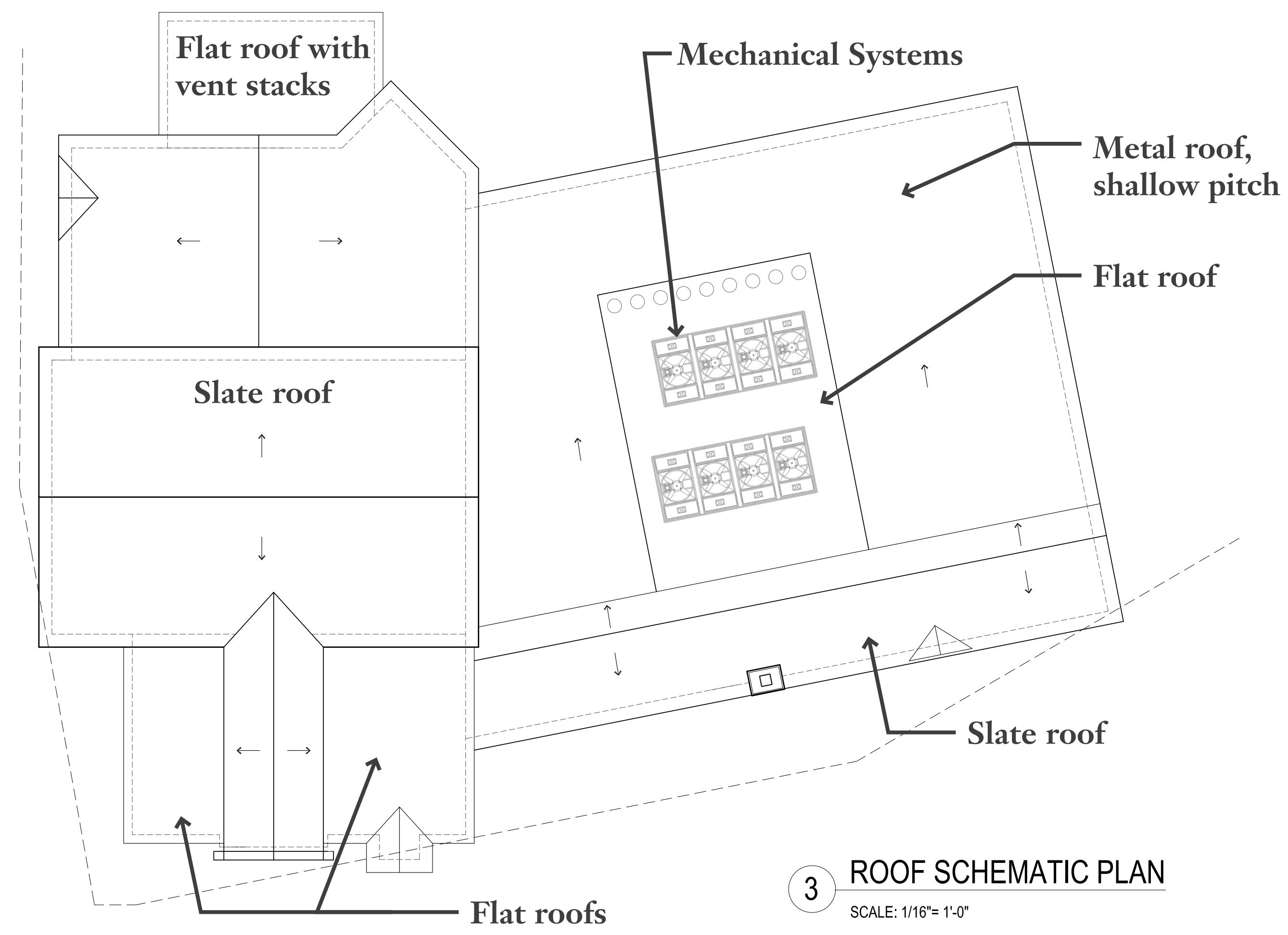
21 Rockview Avenue
North Plainfield, Somerset Co., New Jersey

1.01

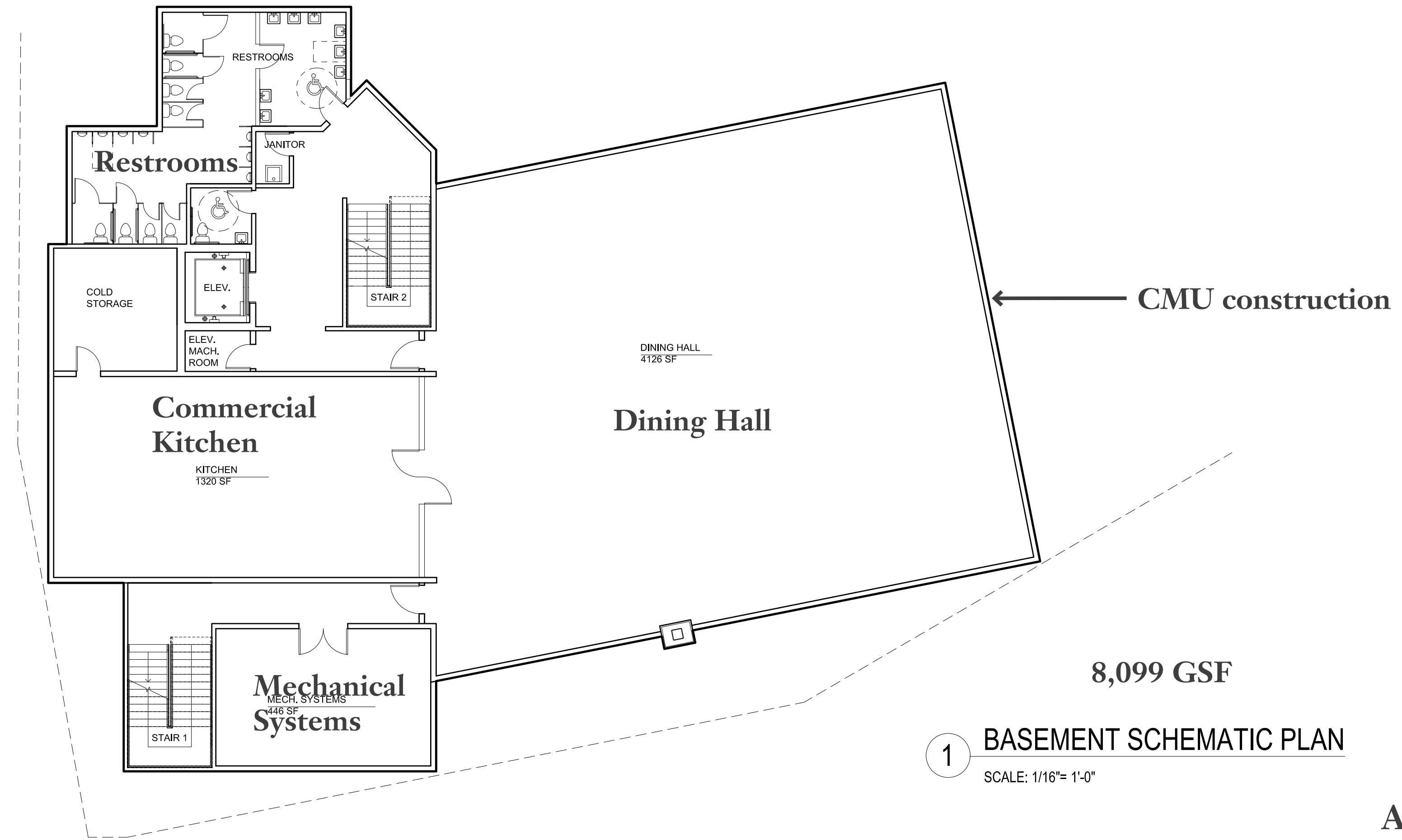
January 28, 2022 - Revised



2 SECOND FLOOR SCHEMATIC PLAN
SCALE: 1/16"= 1'-0"



3 ROOF SCHEMATIC PLAN
SCALE: 1/16"= 1'-0"

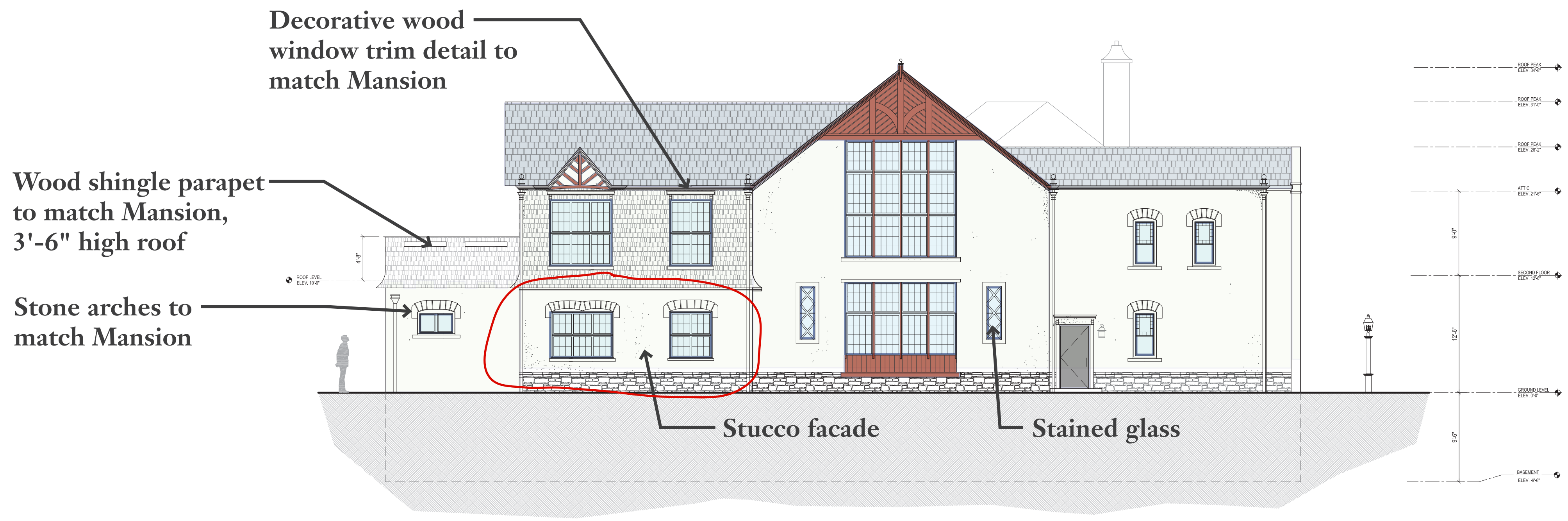


1 BASEMENT SCHEMATIC PLAN
SCALE: 1/16"= 1'-0"

ARCHITECTURAL PLANS

© Copyright 2021 Barton Ross & Partners, LLC Architects, All Rights Reserved.

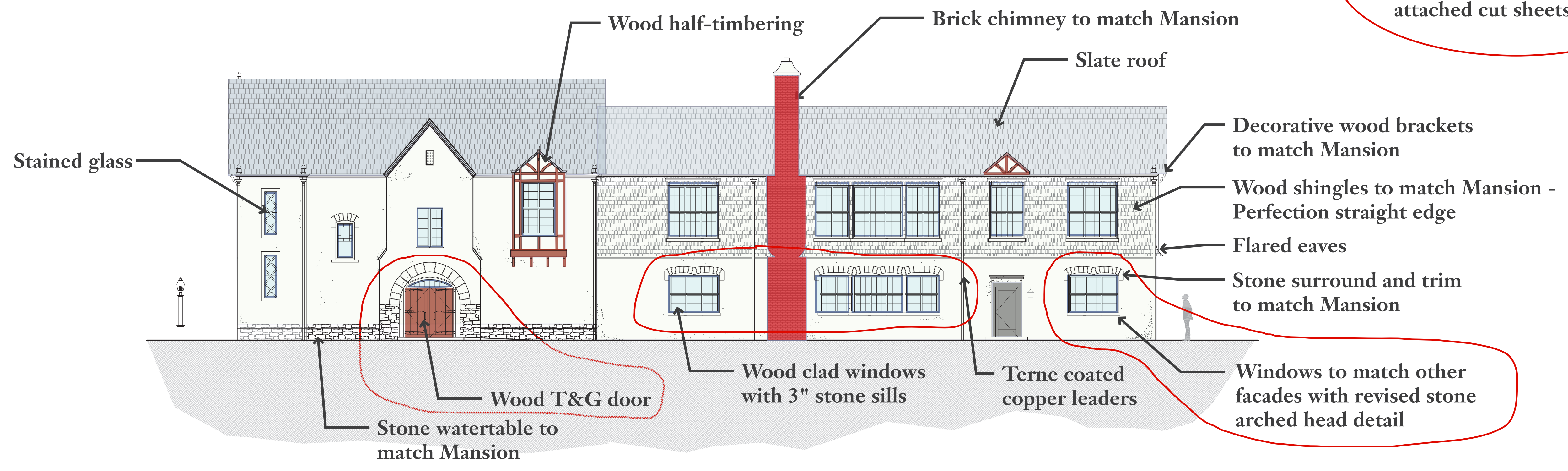




1 SYCAMORE ELEVATION
SCALE: 1/8" = 1'-0"

Note: Windows to be Andersen 400 Series Woodwright Series double-hung, Full divided lite with oil rubbed broze hardware, see attached cut sheets, typ.

Note: Doors to be Andersen Tudor pattern book series with custom hardware, see attached cut sheets, typ.



2 LINDEN ELEVATION
SCALE: 1/8" = 1'-0"

© Copyright 2021 Barton Ross & Partners, LLC Architects, All Rights Reserved.



Barton Ross & Partners, LLC Architects
184 S. Livingston Ave., Suite 9-140
Livingston, NJ 07039 (973) 818-4749

FOR SCHEMATIC PURPOSES ONLY - NOT FOR CONSTRUCTION

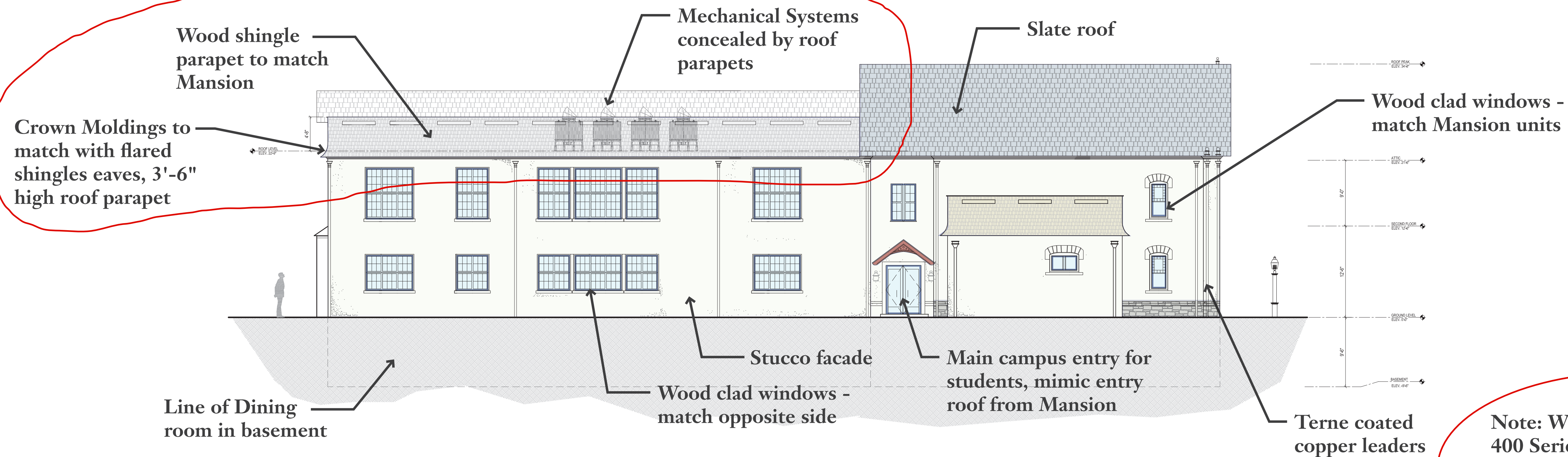
Yeshiva New Academic Building
Schematic Design

21 Rockview Avenue
North Plainfield, Somerset Co., New Jersey

ARCHITECTURAL ELEVATIONS

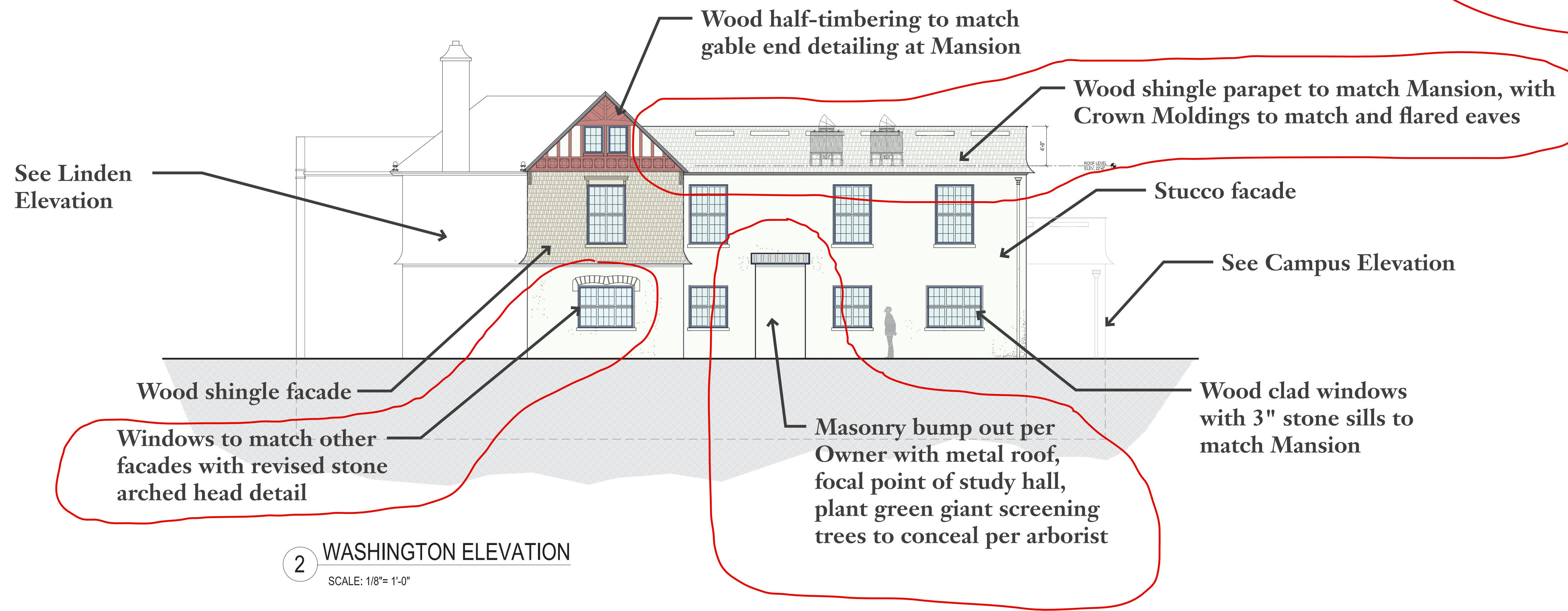
1.03

January 28, 2022 - Revised



1 CAMPUS ELEVATION
SCALE: 1/8" = 1'-0"

Note: Windows to be Andersen 400 Series Woodwright Series double-hung, Full divided lite with oil rubbed broze hardware, see attached cut sheets, typ.



2 WASHINGTON ELEVATION
SCALE: 1/8" = 1'-0"

© Copyright 2021 Barton Ross & Partners, LLC Architects, All Rights Reserved.



Barton Ross & Partners, LLC Architects
184 S. Livingston Ave., Suite 9-140
Livingston, NJ 07039 (973) 818-4749

FOR SCHEMATIC PURPOSES ONLY - NOT FOR CONSTRUCTION

Yeshiva New Academic Building
Schematic Design

21 Rockview Avenue
North Plainfield, Somerset Co., New Jersey

ARCHITECTURAL ELEVATIONS

1.04
January 28, 2022 - Revised



© Copyright 2021 Barton Ross & Partners, LLC Architects, All Rights Reserved.

RENDERING - VIEW LOOKING NORTHEAST



Barton Ross & Partners, LLC Architects
184 S. Livingston Ave., Suite 9-140
Livingston, NJ 07039 (973) 818-4749

FOR SCHEMATIC PURPOSES ONLY - NOT FOR CONSTRUCTION

Yeshiva New Academic Building
Schematic Design

21 Rockview Avenue
North Plainfield, Somerset Co., New Jersey

1.05

January 28, 2022 - Revised



© Copyright 2021 Barton Ross & Partners, LLC Architects, All Rights Reserved.

RENDERING - VIEW LOOKING NORTHWEST



Barton Ross & Partners, LLC Architects
184 S. Livingston Ave., Suite 9-140
Livingston, NJ 07039 (973) 818-4749

FOR SCHEMATIC PURPOSES ONLY - NOT FOR CONSTRUCTION

Yeshiva New Academic Building
Schematic Design

21 Rockview Avenue
North Plainfield, Somerset Co., New Jersey

1.06

January 28, 2022 - Revised