

EVERGREEN TREE:

PRUNE ONLY DEAD, DAMAGED OR DISEASED BRANCHES. DO NOT CUT CENTRAL LEADER.

RUBBER HOSE CHAFING GUARD - BLACK, 1 1/2" DIA. 2 PLY (LOOP IS DOUBLE THE TRUNK DIAMETER)

2" x 2" x 3' SOUND HARDWOOD STAKES, 3 PER TREE EQUALLY SPACED. STAKES TO EXTEND 12" MINIMUM BELOW PLANTING PIT INTO UNDISTURBED GROUND.

MULCH - 3" MINIMUM DEPTH WITH A 5" SAUCER AND PLACED TO ALIGN WITH THE DRILLLINE OF THE TREE (MULCH MUST NOT COME INTO CONTACT WITH THE TREE BARK).

ROTILL IN TOPSOIL AND PEAT MOSS MIX, 3:1 RATIO BY VOLUME TO A DEPTH OF 12". 3 TIMES THE DIA. OF THE ROOT BALL AROUND THE TREE.

SCARIFIED SUBGRADE. REMOVE ALL CONSTRUCTION DEBRIS FROM PLANTING PIT.

REMOVE ALL BURGLAP, ROPE OR WIRE FROM THE TOP 1/3 OF THE ROOTBALL REMOVE COMPLETELY ANY NON-Biodegradable MATERIAL FROM THE ENTIRE ROOTBALL.

PLANT TREE SLIGHTLY ELEVATED TO FINISHED GRADE. PLACE TREE ON A PLANTING BASE.

DECIDUOUS TREE:

PRUNE ONLY DEAD, DAMAGED OR DISEASED BRANCHES. DO NOT CUT CENTRAL LEADER.

RUBBER HOSE CHAFING GUARD - BLACK, 1 1/2" DIA. 2 PLY (LOOP IS DOUBLE THE TRUNK DIAMETER)

2" x 2" x 3' SOUND HARDWOOD STAKES, 3 PER TREE EQUALLY SPACED. STAKES TO EXTEND 12" MINIMUM BELOW PLANTING PIT INTO UNDISTURBED GROUND.

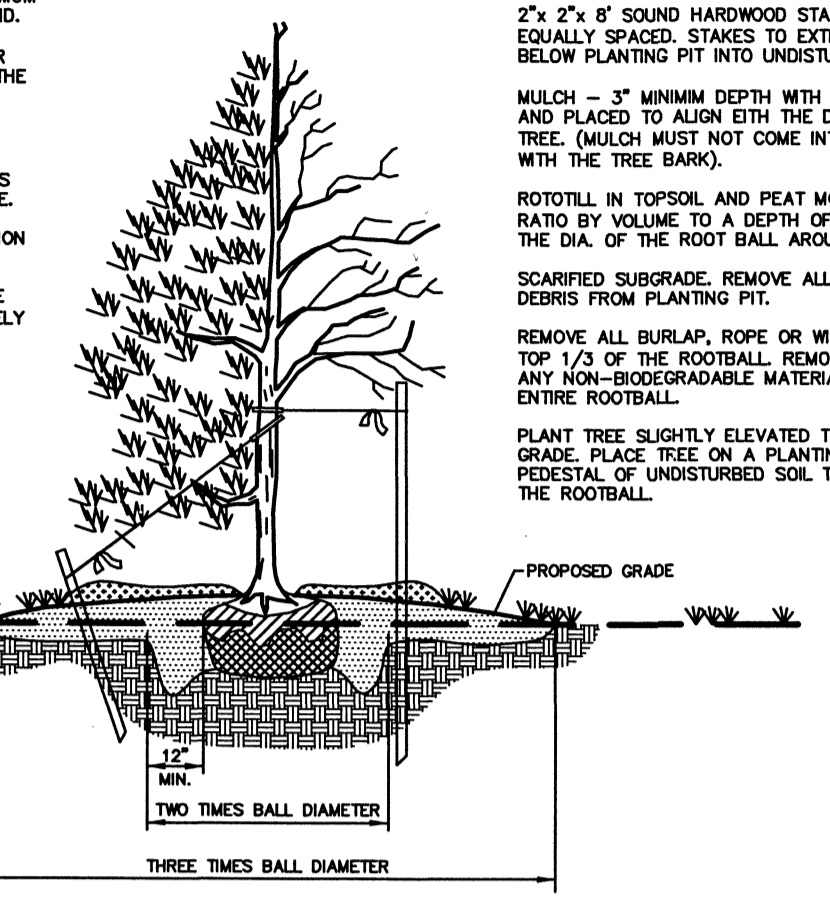
MULCH - 3" MINIMUM DEPTH WITH A 5" SAUCER AND PLACED TO ALIGN WITH THE DRILLLINE OF THE TREE (MULCH MUST NOT COME INTO CONTACT WITH THE TREE BARK).

ROTILL IN TOPSOIL AND PEAT MOSS MIX, 3:1 RATIO BY VOLUME TO A DEPTH OF 12". 3 TIMES THE DIA. OF THE ROOT BALL AROUND THE TREE.

SCARIFIED SUBGRADE. REMOVE ALL CONSTRUCTION DEBRIS FROM PLANTING PIT.

REMOVE ALL BURGLAP, ROPE OR WIRE FROM THE TOP 1/3 OF THE ROOTBALL REMOVE COMPLETELY ANY NON-Biodegradable MATERIAL FROM THE ENTIRE ROOTBALL.

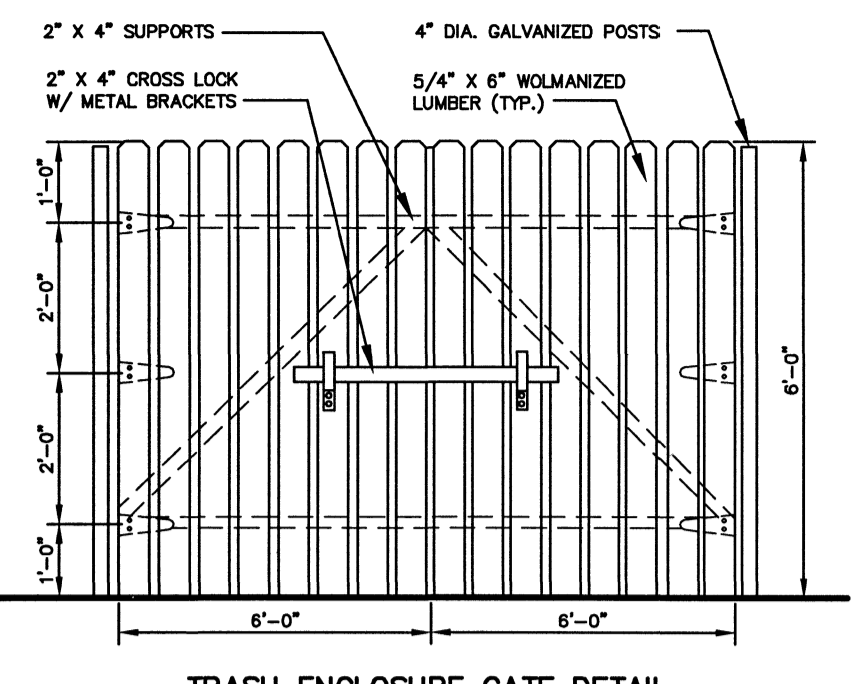
PLANT TREE SLIGHTLY ELEVATED TO FINISHED GRADE. PLACE TREE ON A PLANTING BASE.



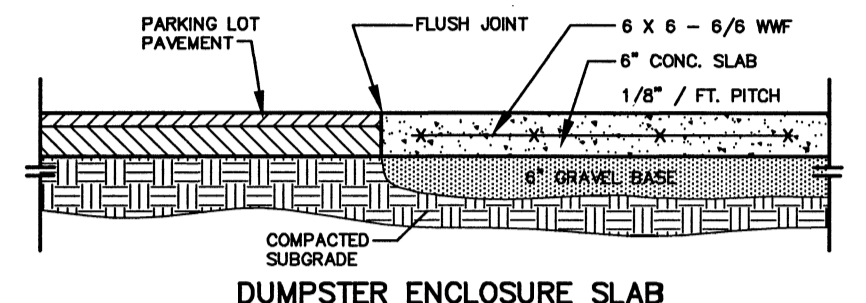
TREE PLANTING DETAIL

PLANTING NOTES:

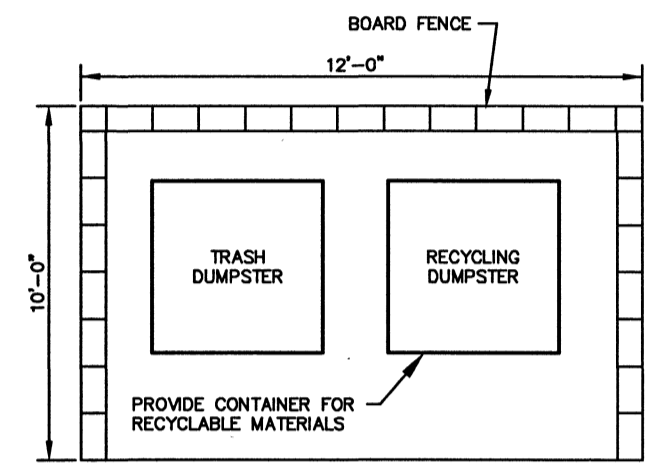
- 1. ALL PLANT MATERIAL SHALL BE NURSERY GROWN STOCK FREE FROM OBJECTIONABLE DISFIGUREMENT AND DISEASE...



TRASH ENCLOSURE GATE DETAIL



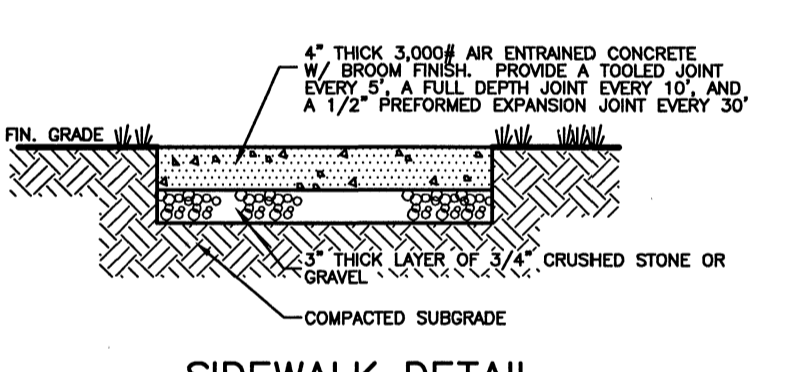
DUMPSTER ENCLOSURE SLAB



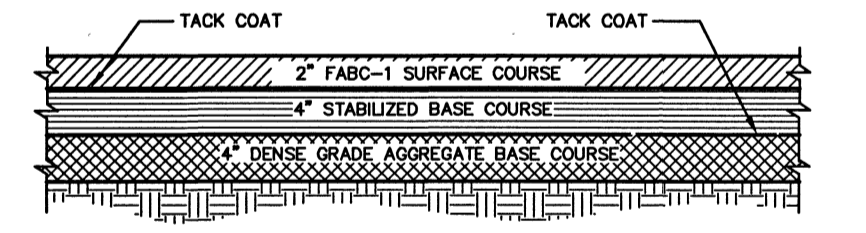
PLAN VIEW

- NOTE: 1. THREE REMAINING SIDES OF DUMPSTER ENCLOSURE TO BE 6 FT. HIGH BOARD FENCE...

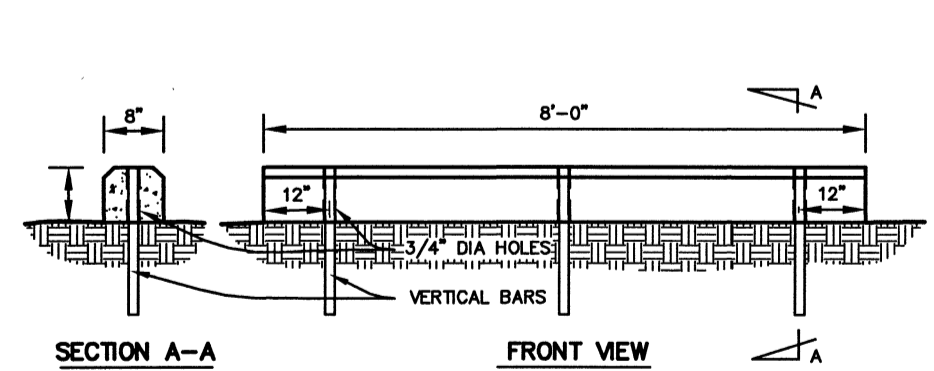
DUMPSTER ENCLOSURE DETAIL



SIDEWALK DETAIL



PARKING LOT PAVEMENT DETAIL



PRECAST CONCRETE WHEEL STOP

CONSTRUCTION MITIGATION MEASURES

- 1. THE SOIL EROSION AND SEDIMENT CONTROL PLAN SHALL REMAIN IN FULL FORCE AND EFFECT DURING THE COURSE OF CONSTRUCTION OF THE ENTIRE PROJECT.

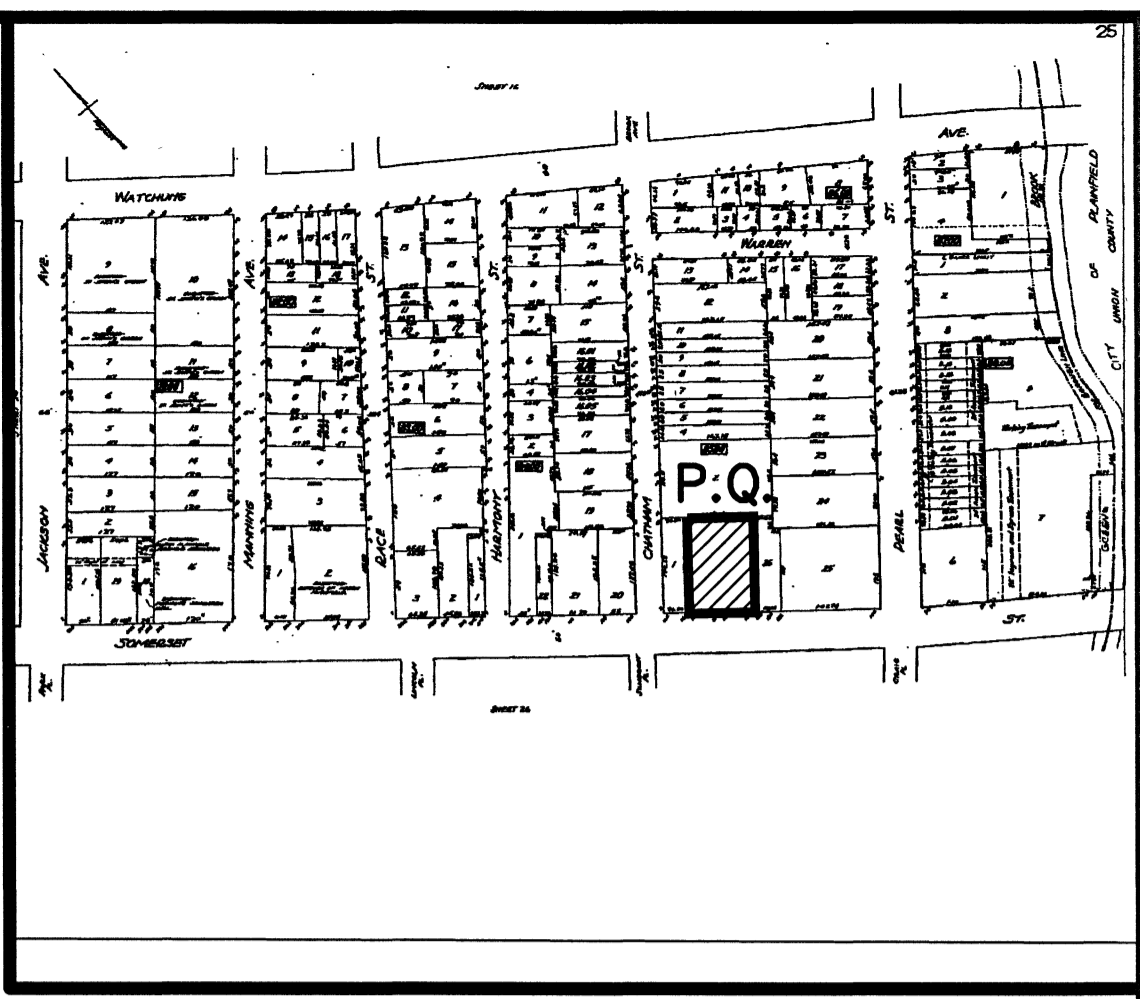
- NOTES: 1. ALL MATERIALS AND CONSTRUCTION SHALL CONFORM TO N.J.D.O.T. STANDARD SPECIFICATIONS FOR ROAD AND BRIDGE CONSTRUCTION 2007...

COVERAGE ANALYSIS:

Table with columns for existing and proposed impervious surfaces, listing building types and square footages.

PARKING REQUIREMENTS

THE TOTAL BUSINESS FLOOR AREA ON THIS SITE IS 4,385 S.F. NO PARKING STALLS ARE REQUIRED SINCE THE GROSS BUSINESS FLOOR AREA IS LESS THAN 5,000 S.F.



KEY MAP TAX MAP - SHEET No. 25 N.T.S.

GENERAL NOTES:

- 1. SUBJECT PROPERTIES KNOWN AND DESIGNATED AS LOTS 27 & 28, BLOCK 85 AS SHOWN ON THE CURRENT TAX MAP (SHEET 25) OF THE BOROUGH OF NORTH PLAINFIELD, SOMERSET CO., N.J.

OWNER/APPLICANT:

PRIME 144 SOMERSET LLC. 140-150 SOMERSET STREET NORTH PLAINFIELD, N.J., 07060

ATTORNEY:

KEVIN J. O'CONNOR, ESQ. LUM, DRASCO & POSTAN, LLC. 103 EISENHOWER PARKWAY, SUITE 401 ROSELAND, N.J., 07068 PH: 973-403-9000

OWNERS CONSENT:

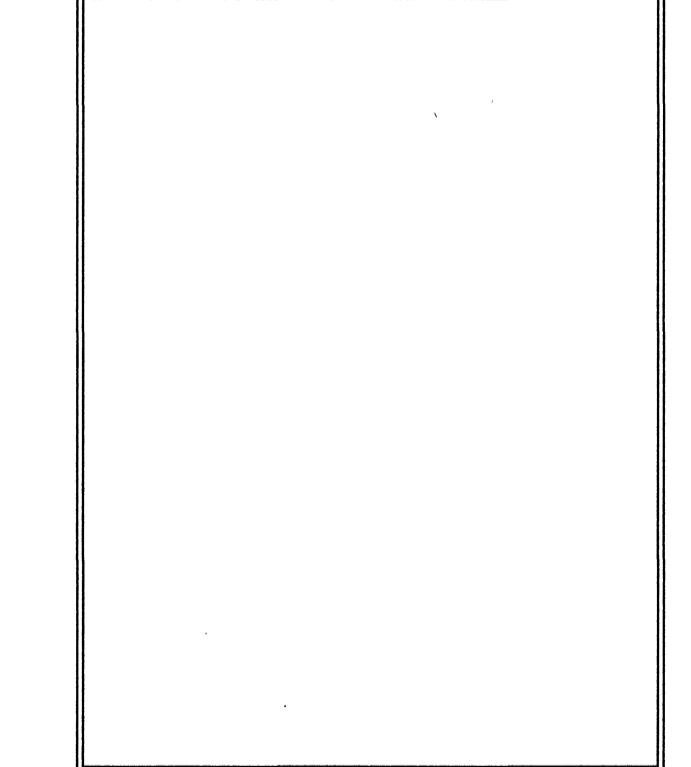
I HEREBY CONSENT TO THE FILING OF THIS SITE PLAN, WITH THE BOARD OF ADJUSTMENT OF THE BOROUGH OF NORTH PLAINFIELD, SOMERSET COUNTY, NEW JERSEY.

Table for owner consent with columns for OWNER, DATE, CHAIRMAN, SECRETARY, ENGINEER.

APPROVALS:

Table for approvals with columns for APPROVED BY, DATE, SCALE.

SOMERSET COUNTY ACCEPTANCE STAMP

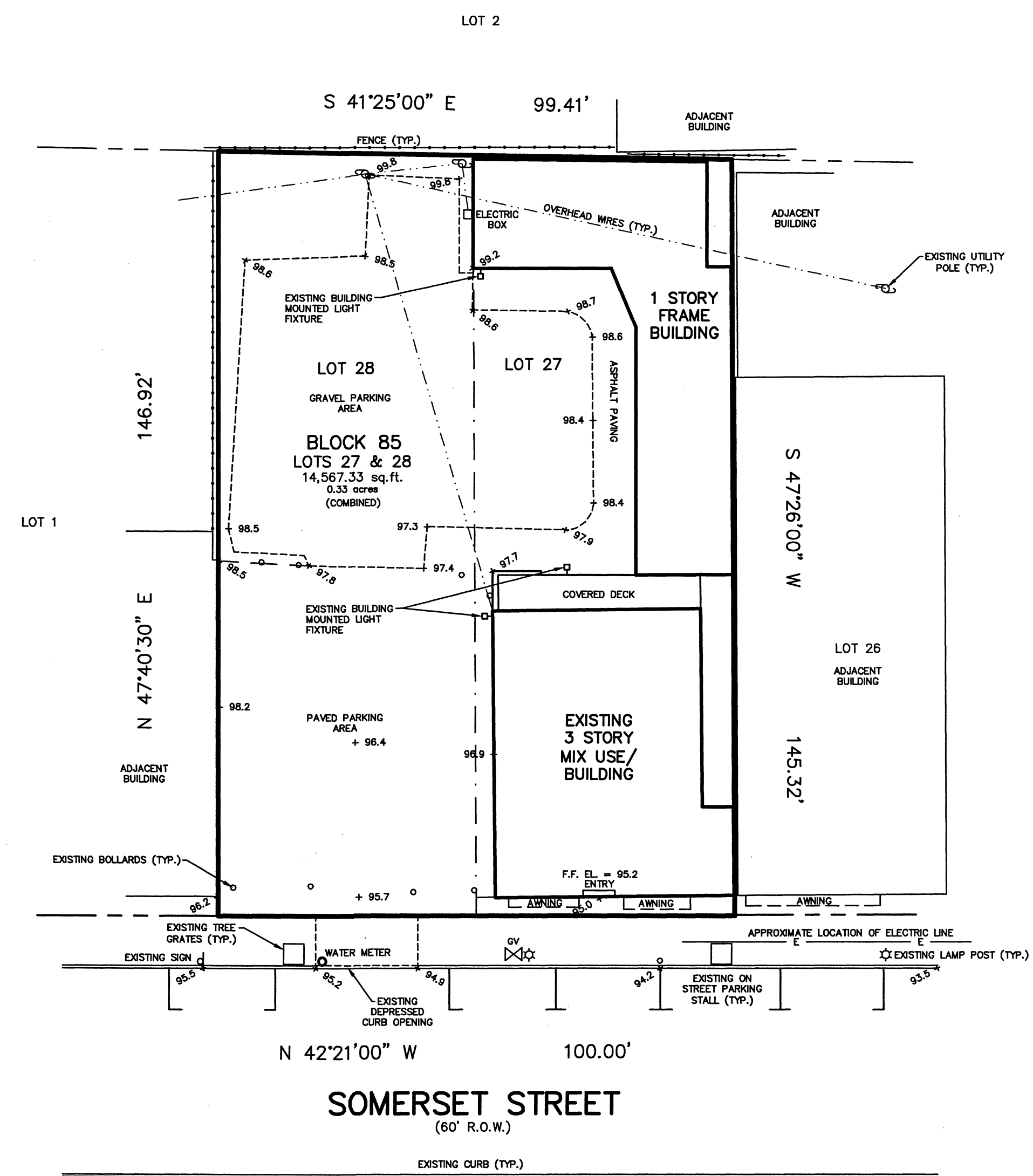


THESE PLANS ARE NOT ACCEPTED FOR CONSTRUCTION UNLESS THIS BLOCK IS STAMPED 'ACCEPTED AS SUBMITTED' BY A STAFF MEMBER OF THE SOMERSET COUNTY ENGINEERING DIVISION...

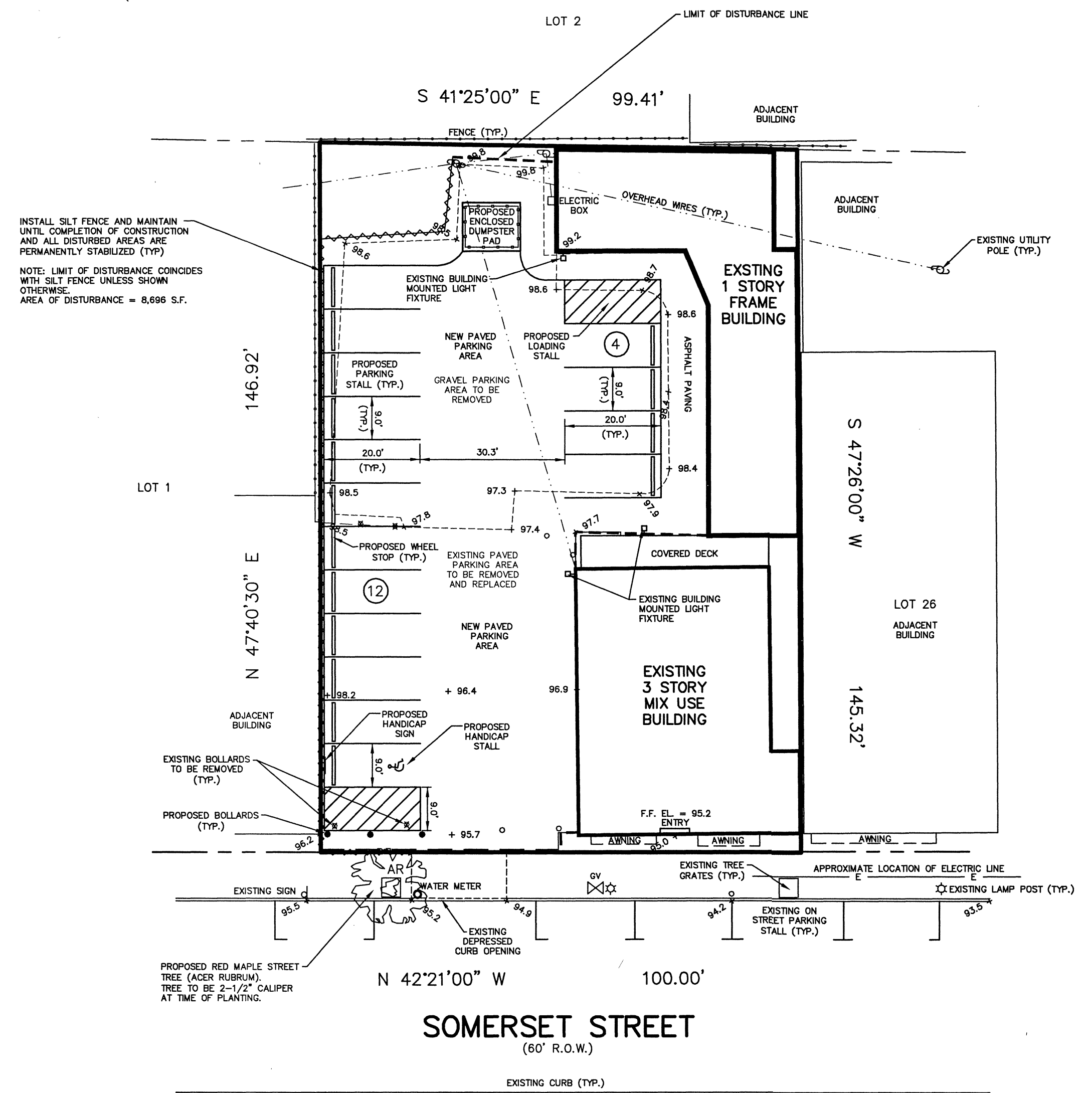
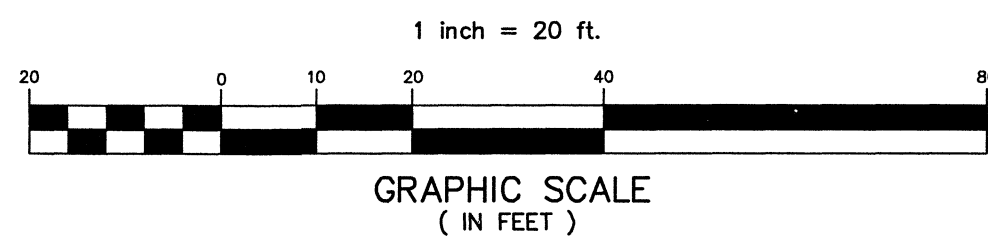
Table for revisions with columns for NO., DATE, REVISION.

PARKER ENGINEERING & SURVEYING P.C. logo and contact information.

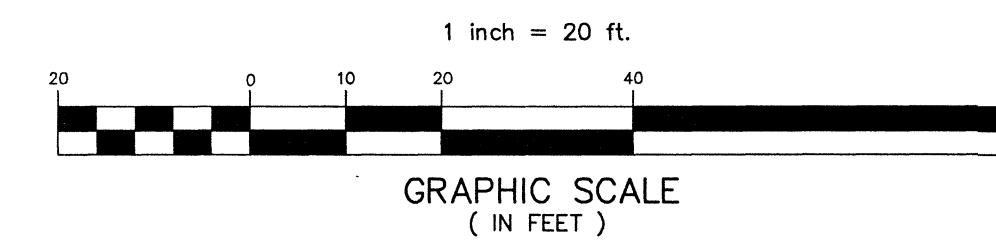
SITE PLAN 140-150 SOMERSET STREET TAX MAP LOTS 27 & 28 BLOCK 85 BOROUGH OF NORTH PLAINFIELD SOMERSET COUNTY, NEW JERSEY. Includes signature of Stephen E. Parker.



**EXISTING CONDITIONS PLAN**



**LAYOUT PLAN**



<p>PARKER ENGINEERING &amp; SURVEYING P.C. 370 EAST MAIN STREET, SOMERVILLE, N.J. 08876 PHONE: (908) 725-4400 - FAX: (908) 722-4401 E MAIL ADDRESS: PARKERES@AOL.COM</p>			<p><b>SITE PLAN</b> 140-150 SOMERSET STREET TAX MAP LOTS 27 &amp; 28 BLOCK 85 BOROUGH OF NORTH PLAINFIELD SOMERSET COUNTY, NEW JERSEY</p> <p><i>Steph E. Parker</i> STEPHEN E. PARKER NEW JERSEY PROFESSIONAL ENGINEER LIC. NO. 36187</p>					
NO.	DATE	REVISION	DRAWN BY	CHECKED BY	SCALE	DATE	FILE	SHEET
			PJD	S.E.P.	1"=20'	04-11-24	15989	2 OF 2
<p>DANIEL E. PARKER NEW JERSEY LAND SURVEYOR LIC. NO. 35866</p>								